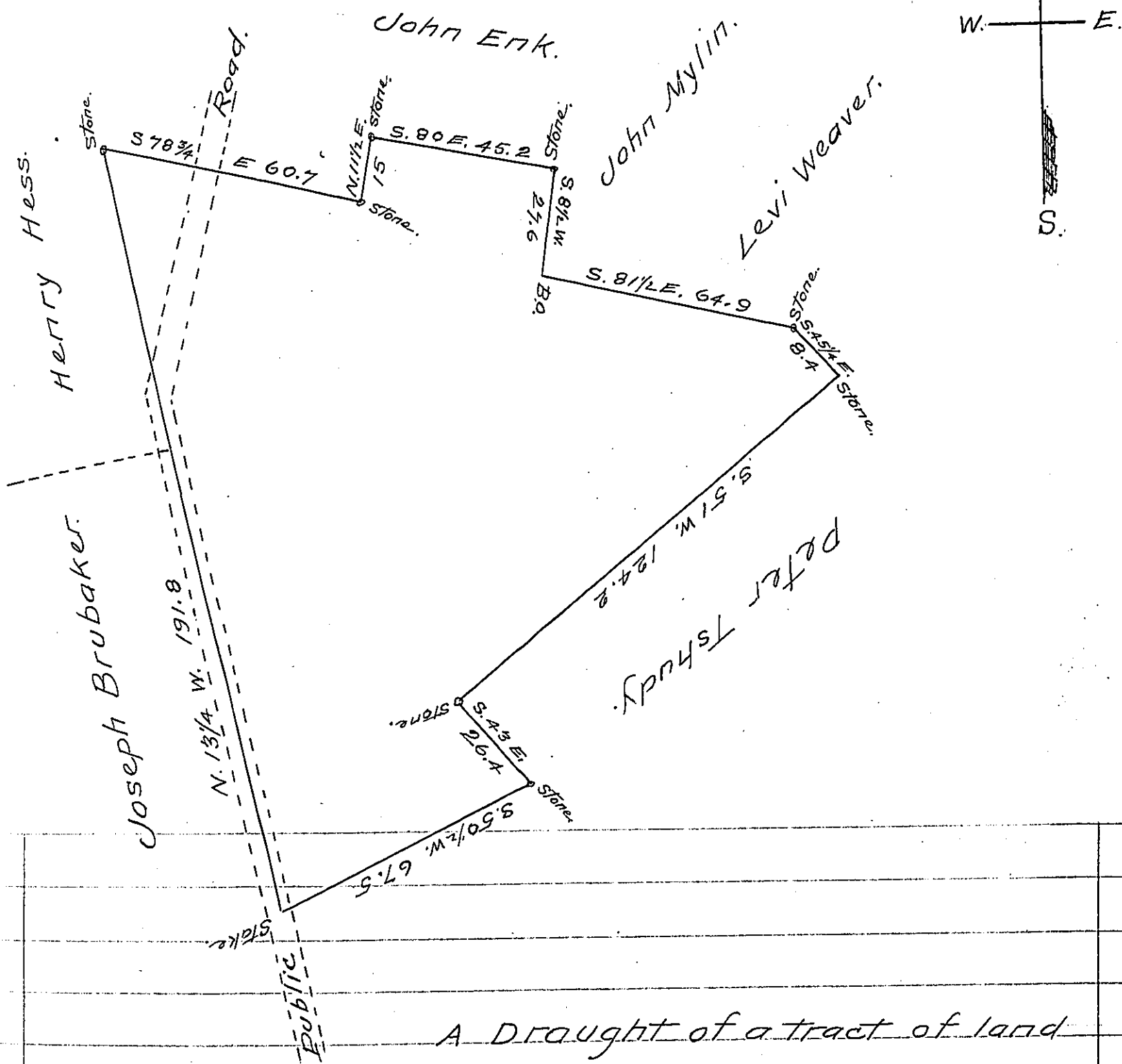


See pg. 153



A Draught of a tract of land  
 Situate in Warwick Township Lan-  
 caster County Containing 91 acres and 36  
 perches, and the usual allowance of six per  
 cent for Roads &c, being part of a larger tract  
 of 322 acres and allowance which was surveyed  
 to Jacob Erk by virtue of a warrant of the 11<sup>th</sup> of  
 May 1749 - Surveyed the above for William Klien  
 December 24<sup>th</sup> 1850. By Henry H. Kurtz  
 (County Surveyor)  
 To John Laporte Surveyer General.

IN TESTIMONY that the above is a copy of the original remaining on file in  
 the Department of Internal Affairs of Pennsylvania, made  
 conformably to an Act of Assembly approved the 16th day of  
 February, 1833, I have hereunto set my Hand and caused  
 the Seal of said Department to be affixed at Harrisburg,  
 this Thirtieth day of June 1905-

*Joseph R. Brown*  
 Secretary of Internal Affairs.